



INDOFINE Chemical Company, Inc.

121 Stryker Lane, Bldg. 30, Suite 1 • Hillsborough, NJ 08844 • U.S.A.

Phone: (908) 359-6778 • FAX: (908) 359-1179

website: www.indofinechemical.com

e-mail: chemical@indofinechemical.com

CERTIFICATE OF ANALYSIS

Catalog Number: 19-661

Product Name: **ISOPIMPINELLIN**
(4,9-Dimethoxypsoralen)

Cas Number: [482-27-9]

Lot Number: 0312213

Chemical Formula: C₁₃H₁₀O₅

Molecular Weight: 246.22

Melting Point 145-147°C

TLC: n-Hexane:Ethyl acetate (7:3)

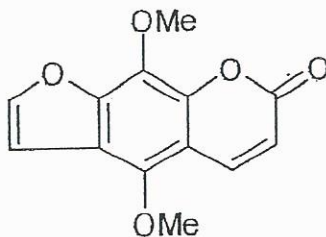
Solubility: Soluble in chloroform

Appearance: Cream powder

NMR Spectrum: Enclosed (Conforms to the structure)

Storage: Store at 2-8°C

Purity(HPLC): 99.10%





INDOFINE Chemical Company, Inc.

121 Stryker Lane, Bldg. 30, Suite 1 • Hillsborough, NJ 08844 • U.S.A.

Phone: (908) 359-6778 • FAX: (908) 359-1179

website: www.indofinechemical.com

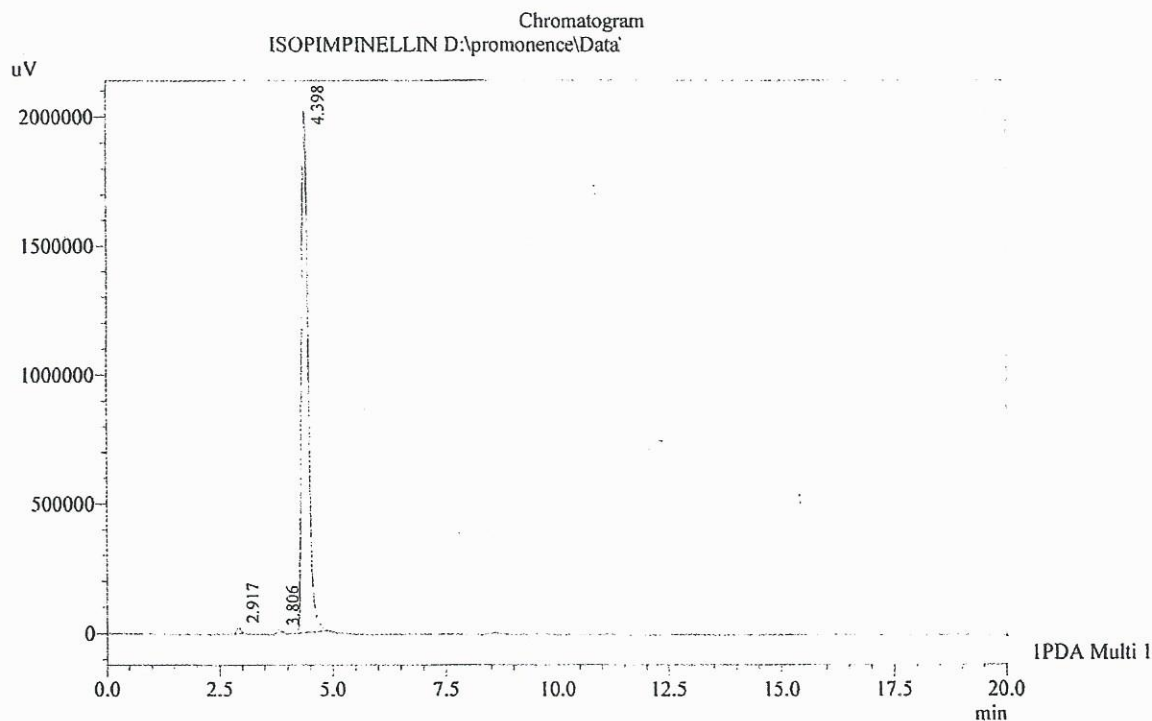
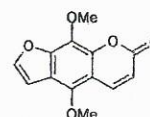
e-mail: chemical@indofinechemical.com

HPLC ANALYSIS

Acquired by : Admin
Sample Name : ISOPIMPINELLIN
Sample ID : Lot no:0312213
Injection Volume : 20 uL
Data Filename : 180615A.lcd
Method Filename : Linear Isocratic.M.lcm

Catalog No.: 19-661
Product Name: Isopimpinellin
Lot No.: 0312213

Column : LUNA C-18(2), (250mm x4.6mm 5.0μ)
Flow : 1.000 mL/min.
Mobile Phase : A(20% of 0.05% TFA in water) B(80% of Acetonitrile)



1 PDA Multi 1 / 230nm 4nm

PeakTable

PDA Ch1 230nm 4nm

Peak#	Name	Ret. Time	Area	Area %	Relative Retention Time
1	RT:2.917	2.917	126033	0.61	0.66
2	RT:3.806	3.806	61081	0.30	0.87
3	ISOPIMPINELLIN	4.398	20503364	99.10	1.00
Total			20690478	100.00	



INDOFINE Chemical Company, Inc.

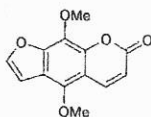
121 Stryker Lane, Bldg. 30, Suite 1 • Hillsborough, NJ 08844 • U.S.A.

Phone: (908) 359-6778 • FAX: (908) 359-1179

website: www.indofinechemical.com

e-mail: chemical@indofinechemical.com

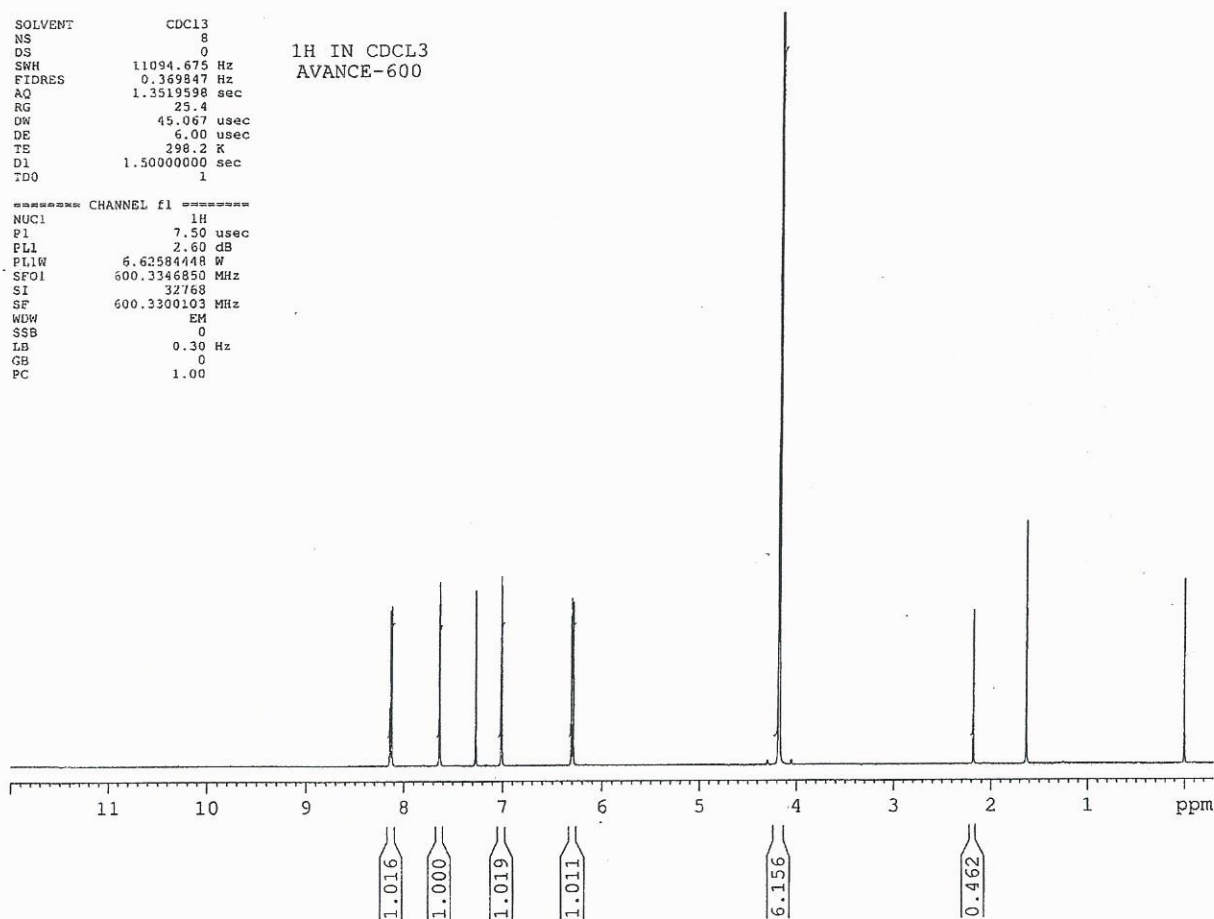
Catalog No.: 19-661
Product Name: Isopimpinellin
Lot No.: 0312213



SOLVENT CDCL3
NS 8
DS 0
SWH 11094.675 Hz
FIDRES 0.369847 Hz
AQ 1.3519598 sec
RG 25.4
OW 45.067 usec
DE 6.00 usec
TE 298.2 K
D1 1.50000000 sec
TDO 1

1H IN CDCL3
AVANCE-600

----- CHANNEL f1 -----
NUC1 1H
P1 7.50 usec
PL1 2.60 dB
PL1W 6.62584448 W
SFO1 600.3346850 MHz
SI 32768
SF 600.3300103 MHz
WEW EM
SSB 0
LB 0.30 Hz
GB 0
PC 1.00





INDOFINE Chemical Company, Inc.

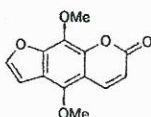
121 Stryker Lane, Bldg. 30, Suite 1 • Hillsborough, NJ 08844 • U.S.A.

Phone: (908) 359-6778 • FAX: (908) 359-1179

website: www.indofinechemical.com

e-mail: chemical@indofinechemical.com

Catalog No.: 19-661
Product Name: Isopimpinellin
Lot No.: 0312213



SOLVENT CDCL3
NS 8
DS 0
SWH 11094.675 Hz
FIDRES 0.369847 Hz
AQ 1.3519598 sec
RG 25.4
DW 45.067 usec
DE 6.00 usec
TE 298.2 K
D1 1.5000000 sec
TDO 1

1H IN CDCL3
AVANCE-600

===== CHANNEL f1 =====
NUC1 1H
P1 7.50 usec
PL1 2.60 dB
PL1W 6.62584448 W
SFO1 600.3346850 MHz
SI 32768
SF 600.3300103 MHz
NDW EM
SSB 0
LB 0.30 Hz
GB 0
PC 1.00

